

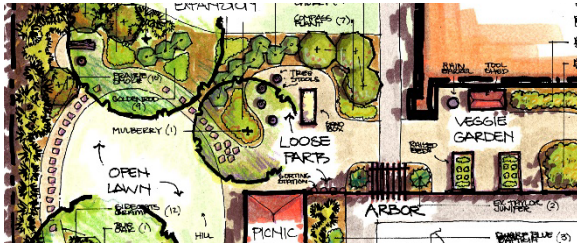
Our Landscape Services

Since 1978, the Nebraska Statewide Arboretum has been working to plant Nebraska for **healthy people, vibrant communities and a resilient environment**. Landscape consulting services are a way for us to share what we've learned to help you improve the quality and maintainability of your community green space.



Visioning and Master Planning

Together we can transform your community, corridor or campus into a remarkable place that celebrates people and nature. Our collaborative process leads to inspirational ideas and an illustrative 'road map' with which to pursue funding.



Plant Selection and Design

We can develop a planting plan for your project that showcases the beauty of eco-friendly landscaping while fitting your budget and comfort level. Get a map of plant locations and a species list to present to nurseries, contractors and volunteers.



Care Guides and Inventories

Learn about the plants that live in your landscape and how to take care of them season-by-season. Our horticulture experts are happy to draw up management plans or provide in-person training for professionals and volunteer stewards.



Community Education

We want to spread the word about planting Nebraska for healthy people, vibrant communities and a resilient environment. Invite us over to help you raise public awareness about your landscape and foster appreciation for every day nature where you live.



Are We a Good Fit?

Do you want to grow special places for plants and people? Do you care about building soil, saving energy, protecting water and providing habitat? Do you want to showcase the natural beauty of Nebraska? We do, too.

Sites that may benefit from our services include parks, schools, college campuses, golf courses, fairgrounds, courthouses, libraries, transportation corridors and other public spaces as well as commercial sites such as corporate campuses, retail centers and industrial areas.

Design Help

Need assistance getting a public or semi-public project going? The Nebraska Statewide Arboretum can help make it a reality. Over the years, we have helped hundreds of individuals, communities, businesses and design and engineering professionals develop recipes for vibrant places. **Having a firm vision is an important first step.**

Express Design (\$100-\$600 + travel)

A good option for getting inspiration for a small-scale planting project. Our staff visits the project site, meets with the client and draws up a simple planting plan in the field or shortly thereafter. This sketch depicts species and locations atop an existing site map or aerial photograph and is emailed to the client, without any expectations of follow-up visits or revisions. The client is charged by the hour for field time (typically 2-4 hours) and travel time.

- On-site staff visit
- PDF planting plan sketch overlaying an aerial photograph of the project site

Standard Design (\$600-\$3,000)

A good option for planning or visioning more complex projects or large-scale spaces. Our staff visits the project site and meets with the project team to learn about its vision and goals for the landscape. The designer uses this information to generate landscape ideas and draft a concept plan for the project. The designer then presents the plan to the project team for feedback. A more detailed planting plan depicting species and locations is then developed and presented to the project team either in person or via on-line meeting. We make changes to the plans as needed (2 revisions maximum).

- On-site staff visit and up to two on-site or remote design presentations
- Drafted concept/planting plans + up to 2 revisions
- Plant list and cost estimate for plant material

Potential *Extra Products & Services*

- + Presentation-quality graphics to help visualize the design and sell the project
- + Maintenance plan; landscape signage design(s).
- + On-site guidance on planting day (lay out plants, instruct volunteers, etc.)

Consultation with Design Teams

A good option for professional design teams seeking plant-focused expertise for landscape projects. Our staff meets with the project design team (i.e. engineers, landscape architects, architects, developers) to explore site challenges, opportunities and solutions relating to plants and green infrastructure. Our staff then provides recommendations for the design team to incorporate into its proposal to their client, including notes and sketches on planting design, species selection and management practices that optimize beauty, sustainability and maintainability.

- Staff visit(s) with the lead design team
- Written and/or graphic recommendations on planting design, species selection and/or management practices

Potential *Extra Products & Services*

- + Presentation-quality graphics to help visualize the design and sell the project
 - + On-site guidance on planting day (lay out plants, instruct volunteers, etc.)
-

Service Fees

We strive to keep costs as affordable as possible. Fees are based on hourly rates for professional staff and student interns. Other costs include those related to travel and incidentals necessary to complete the project. Cost assistance in the form of discounted rates are available for community groups and Arboretum affiliates.

Standard Rate

\$105/hour for staff
\$40/hour for student interns

Public Sector Rate

\$85/hour for staff
\$30/hour for student interns

~ 20% discount to public sector, non-profits, educational institutions, neighborhoods, etc.

Affiliate Site Rate

\$75/hour for staff
\$25/hour for student interns

~ 30% discount to affiliates or corporate members of the Nebraska Statewide Arboretum.



Travel and Incidentals

- Mileage rate of .50/mile/roundtrip. Mileage can be split if travel is for more than one purpose. No charge for time traveling unless there is a special circumstance.
- Charge actual food and lodging costs in billing. For estimating use \$15/meal, \$25/day food and \$100/night lodging.
- Add 10% fee for incidentals covering communications, copies, supplies & contingencies.

Getting Started

Let's build a partnership that grows along with your landscape—reaching out is the first step.

Please contact Community Landscape Specialist Rachel Anderson at (402) 472-6603 or randerson28@unl.edu to begin.

