

WOODSHIRE BLVD

Introductory Site Analysis - conducted May 17th 2023.



RECOMMENDATIONS

- The site does not have a current Master Plan that addresses Preservation and Maintenance. Developing this plan with NSA or another Landscape Architect would be a priority.
- Proper landscape maintenance practices, including pruning, turf care, tree care, pest control, and plant material replacement should be specified to any neighborhood volunteer or local contractor conducting work in the park. These processes and language would be spelled out in a Master Plan Maintenance Plan.
- NSA believes that the scale of the site requires commercial landscaping equipment for efficient and effective management. This can either be rented, hired locally, or invested in by the neighborhood.
- In order to get a handle on the overgrown shrub beds NSA recommends that one to two large beds are selected each year for the next few years and are “renewal pruned.” This would mean cutting back all shrub vegetation to the ground and encouraging new growth that can then be more easily pruned in managed in the years to come. You could also then determine what you would like to keep, potentially remove, or replace.
- Memorial Plantings are a potential source of revenue for the park maintenance fund, however, all Memorial Tree plantings should be done in accordance with guidelines established during the Master Planning process. If a Master Plan is not conducted, Memorial Plantings should be discouraged, but if accepted they should reflect the historical design intent of Herminghaus and Sutton, using similar species and areas in the park.
- NSA recommends that Memorial Plantings should be re-framed to encourage volunteerism in the park for maintenance, beautification, and other activities that encourage the long term health of the park and its relationship the neighborhood.
- Desires to diversify the park with more native plant materials, prairie plantings, and other flowering species should be thought out and conform to a Master Plan or historical design intent.
- Climate adaptability is a valid concern for wanting to re-evaluate the current landscape and robust discussions about how and what are appropriate strategies for changes to the park should be discussed by multiple stakeholders with the input from area professions.



Visioning and Master Planning

Together we can transform your community, corridor or campus into a remarkable place that celebrates people and nature. Our collaborative process leads to inspirational ideas and an illustrative ‘road map’ with which to pursue funding.

Plant Selection and Design

We can develop a planting plan for your project that showcases the beauty of eco-friendly landscaping while fitting your budget and comfort level. Get a map of plant locations and a species list to present to nurseries, contractors and volunteers.

Care Guides and Inventories

Learn about the plants that live in your landscape and how to take care of them season-by-season. Our horticulture experts are happy to draw up management plans or provide in-person training for professionals and volunteer stewards.

Community Education

We want to spread the word about planting Nebraska for healthy people, vibrant communities and a resilient environment. Invite us over to help you raise public awareness about your landscape and foster appreciation for every day nature where you live.

SITE ANALYSIS MAP

Summer Aerial Map



SITE ANALYSIS MAP

Winter Aerial Map



Google Earth

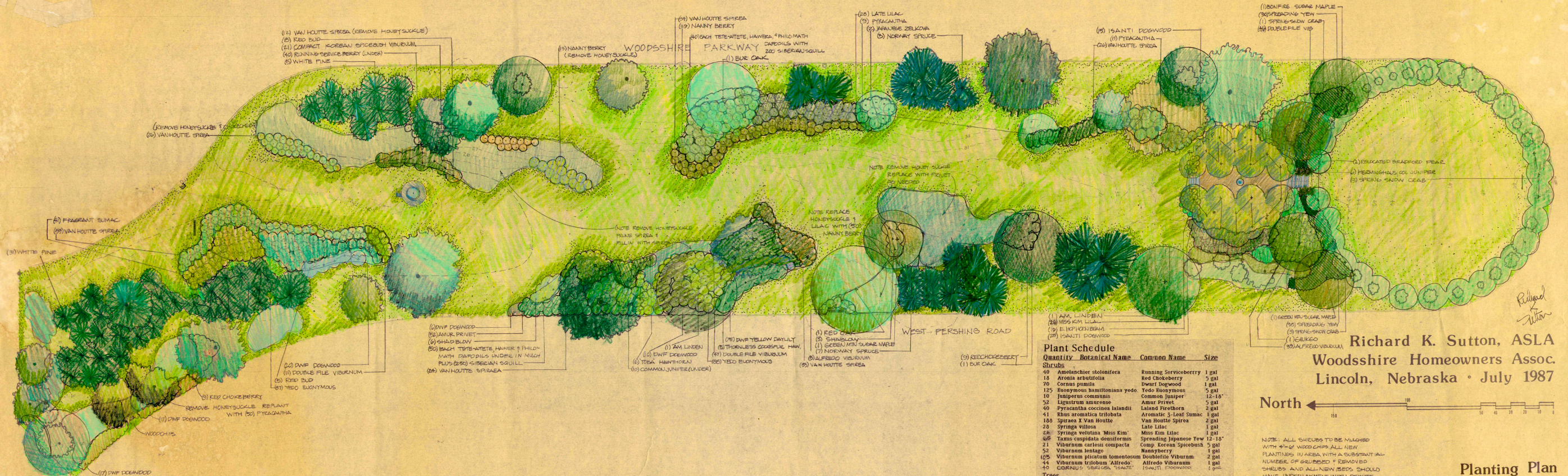
200 ft



1987 SUTTON PLAN

This 1987 Planting Plan by Richard Sutton makes species recommendations for planting and also notes removal of honeysuckle.

LANDSCAPE RESTORATION and MANAGEMENT MASTERPLAN for WOODSSHIRE RESIDENTIAL PARK



Plant Schedule

Quantity	Botanical Name	Common Name	Size
40	Amelanchier alnifolia	Running Serviceberry	1 gal
10	Aronia arbutifolia	Red Chokeberry	5 gal
70	Cornus pumila	Dwarf Dogwood	1 gal
125	Euonymus hainanensis yodo	Yedo Euonymus	5 gal
10	Juniperus communis	Common Juniper	12-18"
52	Ligustrum amurense	Amur Privet	5 gal
40	Pyracantha coccinea lalandii	Laland Firethorn	2 gal
41	Rhus aromatica trilobata	Aromatic 3-Leaf Sumac	1 gal
100	Spiraea x Van Houtte	Van Houtte Spiraea	2 gal
20	Syringa villosa	Late Lilac	1 gal
20	Syringa velutina 'Miss Kim'	Miss Kim Lilac	1 gal
60	Taxus cuspidata densiformis	Spreading Japanese Yew	12-18"
21	Viburnum carlesii compacta	Comp. Korean Spicebush	5 gal
52	Viburnum lentago	Nannyberry	1 gal
25	Viburnum plicatum tomentosum	Doublin Viburnum	2 gal
44	Viburnum trilobum 'Alfredo'	Alfredo Viburnum	1 gal
43	Cornus 'Sibirica' 'Santini'	ISANTI DOGWOOD	1 gal
2	Acer saccharum 'Green Mtn.'	Green Mtn. Sugar Maple	1-1/2' cal
1	Acer saccharum 'Bonfire'	Bonfire Sugar Maple	1-1/2' cal
9	Amelanchier canadensis	Shadblo	4-5'
13	Cornus canadensis	Redbus	4-5'
8	Crataegus x Toba'	Toba Hawthorn	4-5'
5	Crataegus crugalis mermis	Thornless Cockspur Haw.	4-5'
1	Giuga bioba	Giuga	1-1/2' cal
6	Juniperus scop. 'Herminghaus'	Herminghaus Col. Juniper	4-5'
10	Malus x 'Spring Snow'	Spring Snow Crab	4-5'
10	Picea abies	Norway Spruce	4-5'
20	Pinus strobus	White Pine	4-5'
1	Quercus borealis maxima	Red oak	1-1/2' cal
1	Quercus macrocarpa	Bur Oak	1-1/2' cal
2	Tilia americana	American Linden	1-1/2' cal
2	Zelkova serrata	Japanese Zelkova	1-1/2' cal
1	COTTEA 'SIBIRICA'	S. HOFFMANN-BREMER	1-1/2' cal
1	Dwarf Yellow Daylily	90 on Tete-A-Tete, Bowers, and Philadelph. Outlets	
200	Siberian Squill		

Richard K. Sutton, ASLA
Woodsshire Homeowners Assoc.
Lincoln, Nebraska • July 1987

North

NOTE: ALL SHRUBS TO BE MULCHED WITH 4" OF WOOD CHIPS. ALL NEW PLANTINGS IN AREAS WITH A SUBSTANTIAL NUMBER OF GRUBBED & REMOVED SHRUBS AND ALL NEW AREAS SHOULD HAVE INTERCULTURE WITH DEWITT WEED BARRIER. ALL SHRUBS ARE HEAVILY MARKED FOR QUICK EFFECT. NUMBERS COULD BE REDUCED * PLANTS SAVED FURTHER APART.

Planting Plan

SITE PHOTOS

These photos represent various landscape types seen at Woodshire Residential Park including, woodland habitat, turf, shrub and flower beds, mature trees, and paved water ways.



